

DS-2XS6K01-C36S80 Solar Power Kit



- 80 W photovoltaic panel, 360 Wh chargeable lithium battery
- Support battery management, battery display, battery high-low temperature protection, charge-discharge protection, low-battery sleep protection and remote wakeup
- Water and dust resistant (IP66)

▪ Specification

| Interface | |
|-----------------------|---|
| RS-485 | 1 RS-485 (half duplex, connect to Solar Power 4G Network Camera Kit) |
| Power Output | 9 to 12.6 VDC, max. 30 W, 2 × Ø5.5 mm coaxial power plugs |
| General | |
| Dimension | 640.4 mm × 735.9 mm × 760 mm (25.21" × 28.97" × 29.92") (Max. size after it is completely assembled) |
| Package Dimension | 862 mm × 352 mm × 762 mm (33.9" × 13.9" × 30") |
| Weight | Approx. 24 kg (52.9 lb.) |
| With Package Weight | Approx. 30.005 kg (66.1 lb.) |
| Battery | |
| Battery Type | Lithium |
| Capacity | 360 Wh (90 Wh for each battery) |
| Battery Voltage | 10.8 V |
| Operating Temperature | Charging: -20 °C to 45 °C (-4 °F to 113 °F) Discharging: -20 °C to 60 °C (-4 °F to 140 °F) |
| Battery Life | More than 500 cycles |
| Battery Weight | Approx. 2.74 kg (6.0 lb.) (0.685 kg (1.5 lb.) for each battery) |
| Approval | |
| EMC | CE-EMC (EN 55032:2015+A11:2020+A1:2020, EN 50130-4:2011+A1:2014); RCM (AS/NZS CISPR 32: 2015); IC (ICES-003: Issue 7) |
| Safety | CB (IEC 62368-1:2014+A11) |
| Environment | CE-RoHS (2011/65/EU); WEEE (2012/19/EU); Reach (Regulation (EC) No 1907/2006) |
| Protection | Camera: IP66 (IEC 60529-2013) Wind resistance 12 level, up to 40 m/s wind speed resistance |

▪ Typical Application

Hikvision products are classified into three levels according to their anti-corrosion performance. Refer to the following description to choose for your using environment.

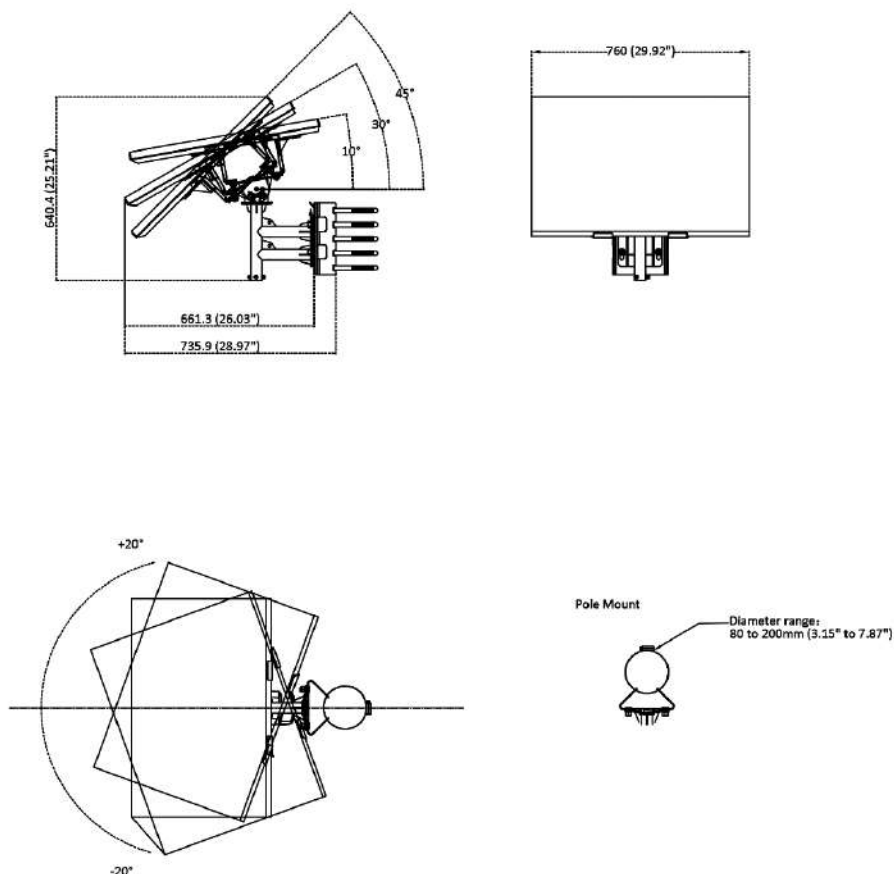
This model has NO SPECIFIC PROTECTION.

| Level | Description |
|------------------------|--|
| Top-level protection | Hikvision products at this level are equipped for use in areas where professional anti-corrosion protection is a must. Typical application scenarios include coastlines, docks, chemical plants, and more. |
| Moderate protection | Hikvision products at this level are equipped for use in areas with moderate anti-corrosion demands. Typical application scenarios include coastal areas about 2 kilometers (1.24 miles) away from coastlines, as well as areas affected by acid rain. |
| No specific protection | Hikvision products at this level are equipped for use in areas where no specific anti-corrosion protection is needed. |

▪ Available Model

DS-2XS6K01-C36S80

▪ **Dimension**



Unit: mm (inch)

Headquarters

No.555 Qianmo Road, Binjiang District,
Hangzhou 310051, China
T +86-571-8807-5998
www.hikvision.com



Follow us on social media to get the latest product and solution information.

