



genesis[®]
NP

NP65-12R
NP65-12RFR

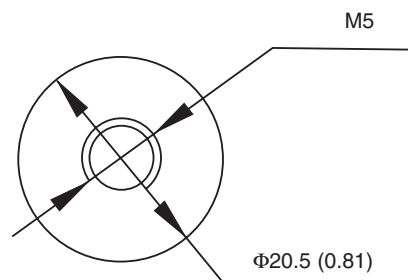
*Sealed Rechargeable
Lead-Acid Battery*

12V, 65.0Ah

Specifications

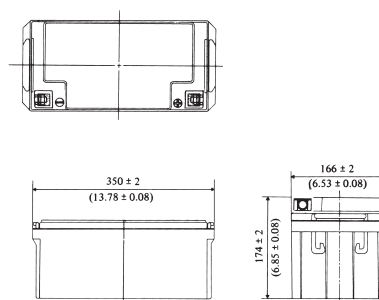
- **NOMINAL VOLTAGE:** 12V
- **NOMINAL CAPACITY:**
 - 20 hr. rate of 3.25A to 10.50V 65.0Ah
 - 10 hr. rate of 6.05A to 10.50V 60.5Ah
 - 5 hr. rate of 11.05A to 10.20V 55.2Ah
 - 1 hr. rate of 39.0A to 9.60V 39.0Ah
- **WEIGHT (approx.):** 50 pounds (22.7 kgs.)
- **ENERGY DENSITY (20 hr. rate):** 1.26 WH/cubic inch (76 WH/liter)
- **SPECIFIC ENERGY (20 hr. rate):** 15.5 WH/pound (34 WH/kg)
- **INTERNAL RESISTANCE OF CHARGED BATTERY:** 5 milliohms (approx.)
- **MAXIMUM DISCHARGE CURRENT WITH STANDARD TERMINALS:** 150 amperes
- **MAXIMUM SHORT-DURATION DISCHARGE CURRENT:** 800 amperes
- **OPERATING TEMPERATURE RANGE:**
 - CHARGE 5°F to 122°F (-15°C to 50°C)
 - DISCHARGE -4°F to 140°F (-20°C to 60°C)
- **CHARGE RETENTION (shelf life) at 68°F (20°C):**
 - 1 month 97%
 - 3 months 91%
 - 6 months 85%
- **LIFE EXPECTANCY:**
 - STANDBY USE** 3 to 5 years
 - CYCLE USE (approx.):**
 - 100% depth of discharge 250 cycles
 - 50% depth of discharge 550 cycles
 - 30% depth of discharge 1200 cycles
- **SEALED CONSTRUCTION:** Can be operated in any position without leakage.
- **STANDARD TERMINAL:** Receptacle terminal
- **HOUSING MATERIAL:** Container and cover made from Flame Retardant ABS (UL94-V0/L.O.I.>28%)

Terminal



DIMENSIONS: MM (INCHES)

Dimensions



UL listing pending - File No MH16464

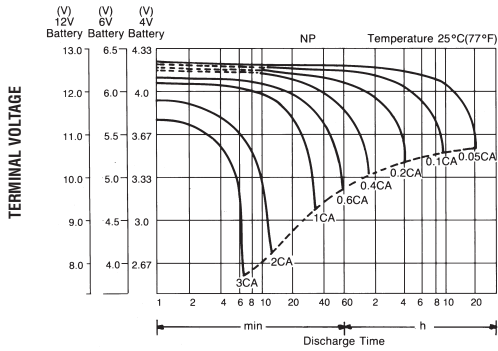
EnerSys[™]

Power/Full Solutions

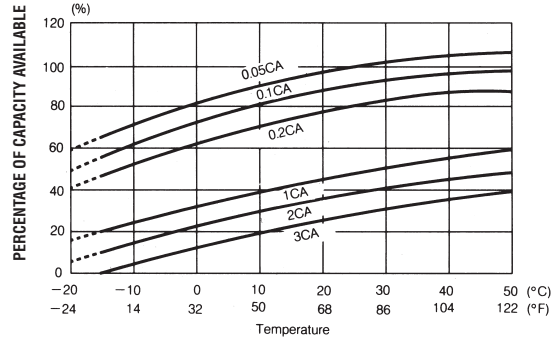


Publication No: EN-NP65-12R-01 • July 2005

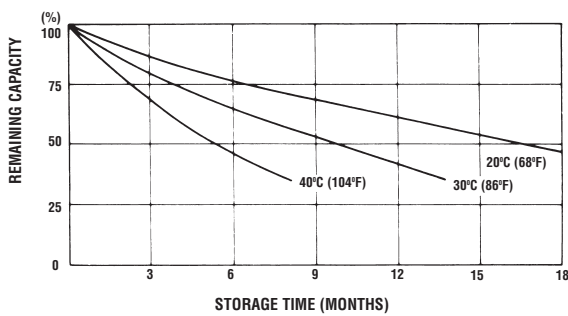
DISCHARGE CHARACTERISTIC CURVES AT 25°C (77°F)



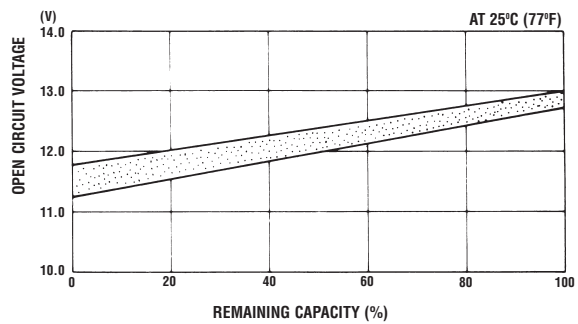
TEMPERATURE EFFECTS IN RELATION TO BATTERY CAPACITY



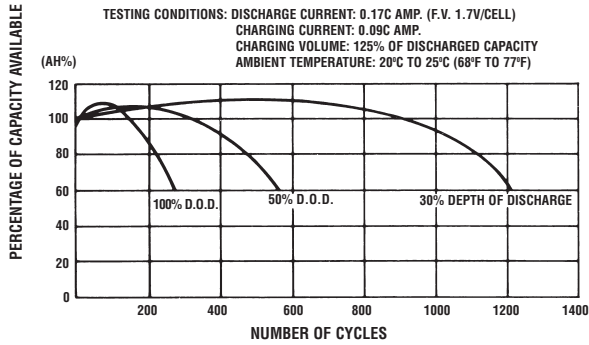
SELF DISCHARGE CHARACTERISTICS



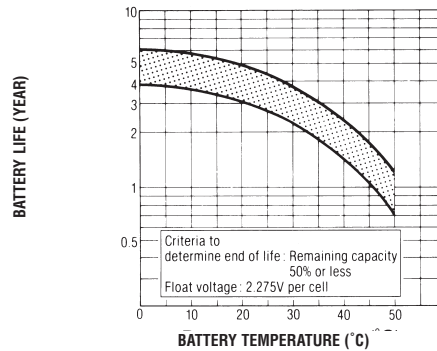
OPEN CIRCUIT VOLTAGE VS REMAINING CAPACITY



CYCLE SERVICE LIFE IN RELATION TO DEPTH OF DISCHARGE



TRICKLE (FLOAT) USE LIFE CHARACTERISTICS



When the battery will be used by current in excess of 3C, consult with EnerSys prior to use.

CHARGING METHODS (At 20°C)

Cycle use: Maximum charging current 16.25A
 Charging voltage 14.4 to 15.0V
Standby use: Float charging voltage 13.50 to 13.80V

CAUTION

- Avoid short circuit
- Do not charge in a sealed container.



EnerSys
 P.O. Box 14145
 Reading, PA 19612-4145
 USA
 Tel: +1-610-208-1991
 +1-800-538-3627

EnerSys EMEA
 Brussels, Belgium
 Tel: +32 (0)2 247 94 47
EnerSys Asia
 Guandong, China
 Tel: +86 755 689 9220

Represented by: